

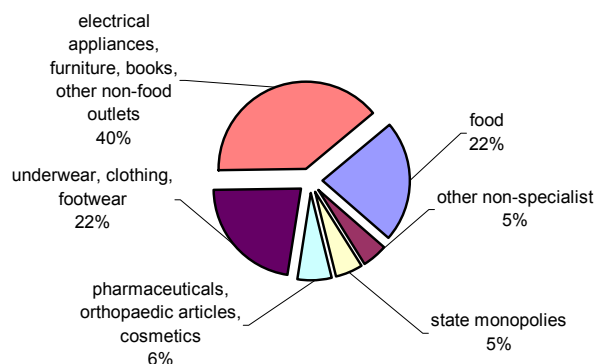
PROVINCE OF COMO

Retail trade

MAKE-UP AND DISTRIBUTION OF THE STOCK

Average area (sq m)	≤ 250	251 – 1,500	1,501 – 5,000	> 5,000	Total
area (sq m)	396,800	177,750	119,500	89,700	783,750
%	50.6	22.7	15.2	11.4	100
no. of outlets	6,111	306	45	13	6,475
%	94.4	4.7	0.7	0.2	100
sq m / 1000 inhabitants	701	314	211	158	1,384

Specialisation (% of total outlets)



LARGE RETAILERS

	area (sq m)	400 – 1,500	1,501 – 5,000	> 5,000	Total
Department Stores	sq m	13,600	22,500	17,000	53,100
	no.	15	9	2	26
Supermarkets	sq m	38,400	32,000	-	70,400
	no.	50	14	-	64
Large specialist stores	sq m		39,700	26,500	66,200
	no.		14	4	18
	area (sq m)	2,500 – 5,000	> 5,000	Total	
Hypermarkets	sq m		25,300	46,200	71,500
	no.		8	7	15
Units within Shopping Centres	% sq m		54.2	88.1	76.1
Total Large Retailers	sq m	52,000	119,500	89,700	261,200
	no.	65	45	13	123
sq m / 1000 inhabitants		92	211	158	461

SHOPPING CENTRES

year of opening	Gla (sq m)	≤ 5,000	5,001 – 10,000	> 10,000	Total
before 2000	sq m	9,350	26,850	103,550	139,750
	no.	3	4	7	14
2000 - 2006	sq m	-	-	-	-
	no.	-	-	-	-
year unknown	sq m	6,900	-	-	6,900
	no.	2	-	-	2
Total Shopping Centres	sq m	16,250	26,850	103,550	146,650
	no.	5	4	7	16
sq m / 1000 inhabitants		29	47	183	259

FACTORY OUTLETS

no.	Area
0	0

CITY OF COMO

<i>Retail trade</i>					
MAKE-UP AND DISTRIBUTION OF THE STOCK					
Average area (sq m)	≤ 250	251 – 1,500	1,501 – 5,000	> 5,000	Total
area (sq m)	96,500	36,300	23,100	14,000	169,900
%	56.8	21.4	13.6	8.2	100
no. of outlets	1,645	57	8	2	1,712
%	96.1	3.3	0.5	0.1	100
sq m / 1000 inhabitants	1,163	437	278	169	2,047
LARGE RETAILERS					
	area (sq m)	400 – 1,500	1,501 – 5,000	> 5,000	Total
Department Stores	<i>sq m</i>	-	7,000	-	7,000
	<i>no.</i>	-	2	-	2
Supermarkets	<i>sq m</i>	6,900	11,100	-	18,000
	<i>no.</i>	7	4	-	11
Large specialist stores	<i>sq m</i>		2,500	8,500	11,000
	<i>no.</i>		1	1	2
	area (sq m)	2,500 – 5,000	> 5,000	Total	
Hypermarkets	<i>sq m</i>		2,500	5,500	8,000
	<i>no.</i>		1	1	2
<i>units within Shopping Centres</i>	<i>% sq m</i>		-	100.0	68.8
Total Large Retailers	<i>sq m</i>	6,900	23,100	14,000	44,000
	<i>no.</i>	7	8	2	17
sq m / 1000 inhabitants		83	278	169	530
SHOPPING CENTRES					
year of opening	Gla (sq m)	≤ 5,000	5,001 – 10,000	> 10,000	Total
before 2000	<i>sq m</i>	4,750	7,700	15,200	27,650
	<i>no.</i>	2	1	1	4
2000 - 2006	<i>sq m</i>	-	-	-	-
	<i>no.</i>	-	-	-	-
year unknown	<i>sq m</i>	-	-	-	-
	<i>no.</i>	-	-	-	-
Total Shopping Centres	<i>sq m</i>	4,750	7,700	15,200	27,650
	<i>no.</i>	2	1	1	4
sq m / 1000 inhabitants		57	93	183	333

CITY OF COMO

PRICES – Small retailers

average sales prices (€/sq m) levels of rent (€/sq m/year)

Prestige areas

Borgo Vico	<i>most frequent</i>	3,900	265
	<i>min</i>	3,300	244
	<i>max</i>	4,500	324

Città Murata	<i>most frequent</i>	6,000	408
	<i>min</i>	5,000	370
	<i>max</i>	6,500	468

Intermediate areas

Grossi-Prudenziiana	<i>most frequent</i>	4,000	280
	<i>min</i>	3,250	215
	<i>max</i>	4,400	326

Innocenzo XI-Varese	<i>most frequent</i>	3,400	238
	<i>min</i>	3,000	198
	<i>max</i>	3,700	274

Suburban areas

Camnago Volta	<i>most frequent</i>	2,400	163
	<i>min</i>	2,000	128
	<i>max</i>	3,000	210

Albate-Muggiò	<i>most frequent</i>	2,500	170
	<i>min</i>	2,100	134
	<i>max</i>	2,800	190

COMO – Rest of the province

<i>Retail trade</i>					
MAKE-UP AND DISTRIBUTION OF THE STOCK					
Average area (sq m)	≤ 250	251 – 1,500	1,501 – 5,000	> 5,000	Total
area (sq m)	300,300	141,450	96,400	75,700	613,850
%	48.9	23.0	15.7	12.3	100
no. of outlets	4,466	249	37	11	4,763
%	93.8	5.2	0.8	0.2	100
sq m / 1000 inhabitants	530	250	170	134	1,084
LARGE RETAILERS					
	area (sq m)	400 – 1,500	1,501 – 5,000	> 5,000	Total
Department Stores	<i>sq m</i>	13,600	15,500	17,000	46,100
	<i>no.</i>	15	7	2	24
Supermarkets	<i>sq m</i>	31,500	20,900	-	52,400
	<i>no.</i>	43	10	-	53
Large specialist stores	<i>sq m</i>		37,200	18,000	55,200
	<i>no.</i>		13	3	16
	area (sq m)	2,500 – 5,000	> 5,000	Total	
Hypermarkets	<i>sq m</i>		22,800	40,700	63,500
	<i>no.</i>		7	6	13
<i>Units within Shopping Centres</i>	<i>% sq m</i>		60.1	86.5	77.0
Total Large Retailers	<i>sq m</i>	45,100	96,400	75,700	217,200
	<i>no.</i>	58	37	11	106
sq m / 1000 inhabitants		93	199	157	449
SHOPPING CENTRES					
year of opening	Gla (sq m)	≤ 5,000	5,001 – 10,000	> 10,000	Total
before 2000	<i>sq m</i>	4,600	19,150	88,350	112,100
	<i>no.</i>	1	3	6	10
2000 - 2006	<i>sq m</i>	-	-	-	-
	<i>no.</i>	-	-	-	-
year unknown	<i>sq m</i>	6,900	-	-	6,900
	<i>no.</i>	2	-	-	2
Total Shopping Centres	<i>sq m</i>	11,500	19,150	88,350	119,000
	<i>no.</i>	3	3	6	12
sq m / 1000 inhabitants					
<i>immediate surrounding area</i>		-	-	1,162	1,162
<i>rest of province*</i>		26	43	90	159
<i>Total province</i>		20	34	156	210

(*) excluding the immediate surrounding area

COMO – Rest of province

PRICES – Small retailers			
		<i>average sales prices (€/sq m)</i>	<i>levels of rent (€/sq m/year)</i>
Immediate surrounding areas*	<i>most frequent</i>	2,260	163
	<i>min</i>	1,800	126
	<i>max</i>	2,800	210
rest of province°	<i>most frequent</i>	2,050	145
	<i>min</i>	1,620	110
	<i>max</i>	2,470	185

(*) the municipalities of Blevio, Brunate, Capiago Intimiano, Casnate con Bernate, Cavallesca, Grandate, Lipomo, Montano Lucino, San Fermo della Battaglia, Senna Comasco, Tavernerio.

(°) excluding the municipalities of the immediate surrounding area.